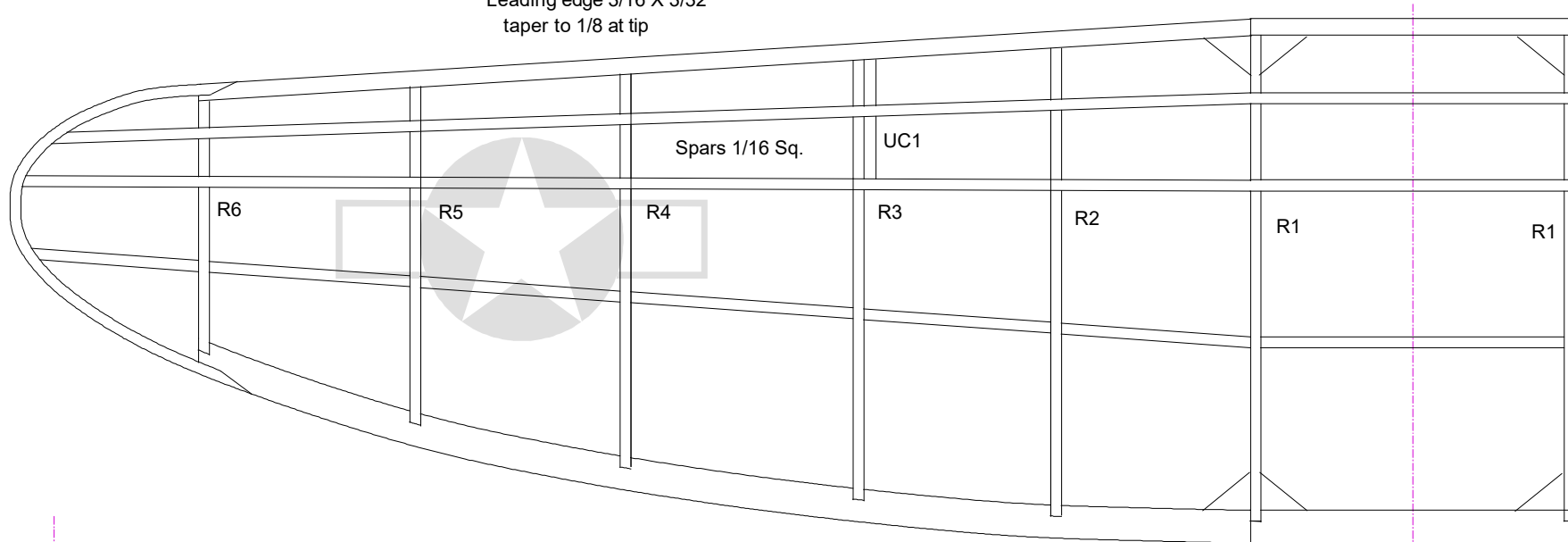
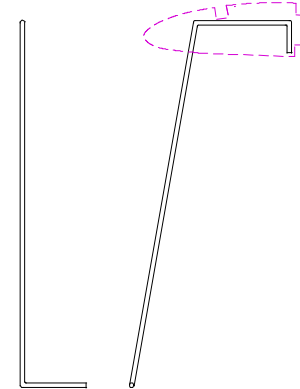
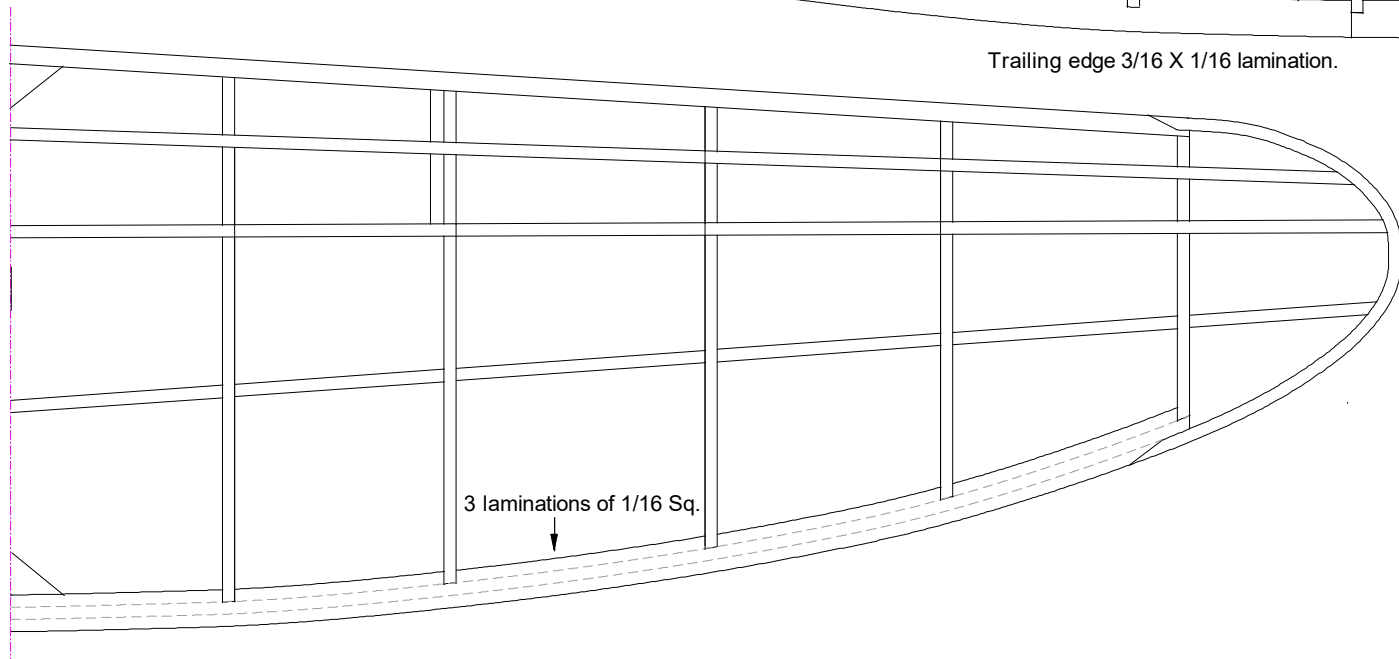




Leading edge 3/16 X 3/32
taper to 1/8 at tip



Trailing edge 3/16 X 1/16 lamination.



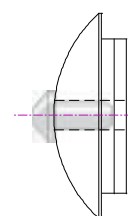
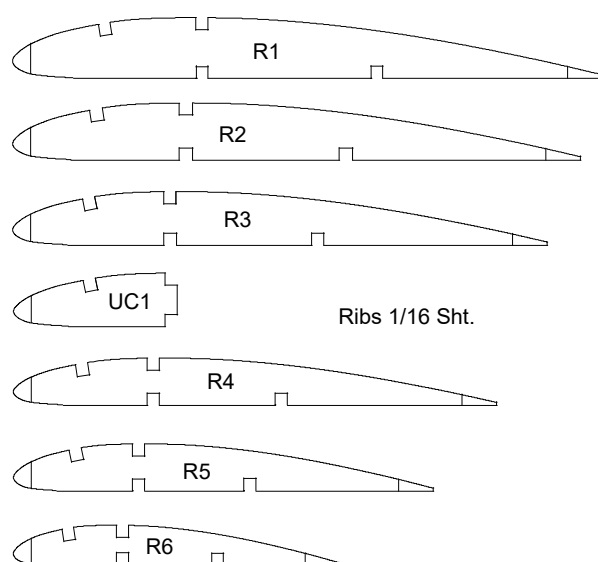
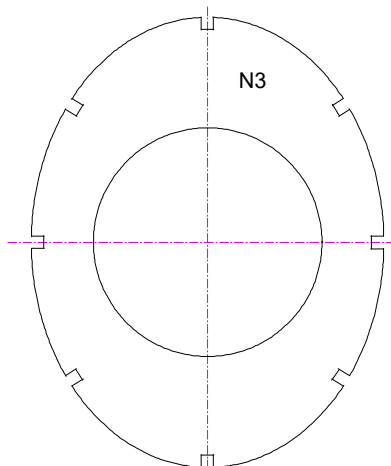
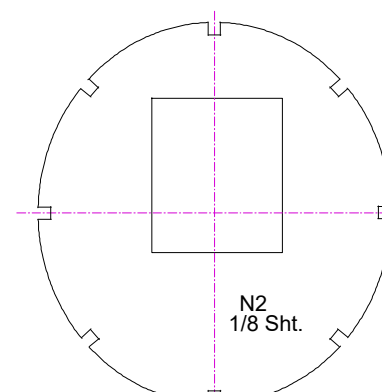
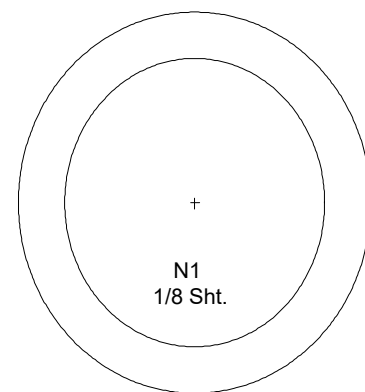
Landing gear from 0.6mm piano wire
Sandwich between UC1 & rib R3
with the axle facing inwards.
Make an opposing pair.



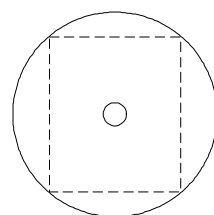
N4s. 2 req.

N4t

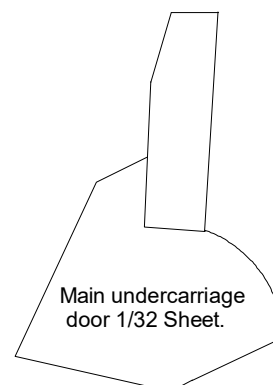
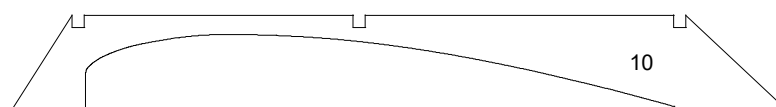
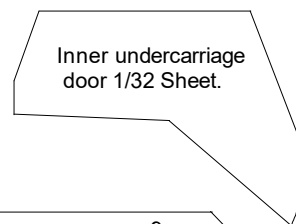
N4b



Nose block
Front dome 1/4 Sht.
backed by a 1/64 ply disc
Rear plug, 2 laminations
of 1/16 Sht glued cross grain.



7/8" Dihedral.



note : rib R3 is
vertical to angle
undercarriage

